



## Residential and Commercial

# Mandarin Oriental Hotel



Client	Mandarin Inn
Project	Mandarin Oriental Hotel
Location	Washington D.C.
Timetable	2009
Products used	wedi Fundo System, building panel 5/8", wedi Subliner Dry
Description	The Mandarin Oriental is a international chain of high class Hotels.



# Jean Nouvel Condominiums



Client Cape Advisors, NYC

Project Jean Nouvel Condominiums

Location Chelsea Piers, New York City, New York, USA

Timetable 3 Months

Products used wedi Fundo System, building panel 5/8" , wedi Subliner Dry

Description In conjunction with the 20th anniversary of the opening of the Arab

World Institute, construction has begun in New York City on Nouvel's latest glass and steel

landmark, a direct material and conceptual descendant of his Paris tour de force: 100 11th

will be a 23-story tower described by its architect as "a vision machine" at the intersection

of 19th Street and the West Side Highway, along the Hudson River in Manhattan.



# LAX Bathroom Remodeling



Client Los Angeles international Airport

Project Bathroom Remodeling

Location Los Angeles, California

Timetable 3 Months

Products used wedi Fundo System, building panel 5/8" , wedi Subliner Dry

Description 1 " wedi building panel 168 Units



# Stephanie Inn



Client	Emser Tile Portland, OR
Project	Stephanie Inn
Location	Cannon Beach, OR
Timetable	3 Months
Products used	45 wedi shower systems with soap niche's ½" board on the tub decks
Description	Using wedi shower systems during this 2009 renovation shaved days off the construction schedule and assisted in getting the hotel reopened up ahead of schedule.



# Bell Hill Development



Client Centex Homes / Superfloors

Project Bell Hill Development

Location Dupont , Washington

Timetable 2008 & 2009

Products used 1/2" wallboard

Description wedi 1/2" building panel was used on all shower walls and sealed to the Acrylic shower pans. Wedi 1/2" wallboard was also used on the tub decks. 90 homes total.



# Sparkling Hill Resort



Client Julian Tile

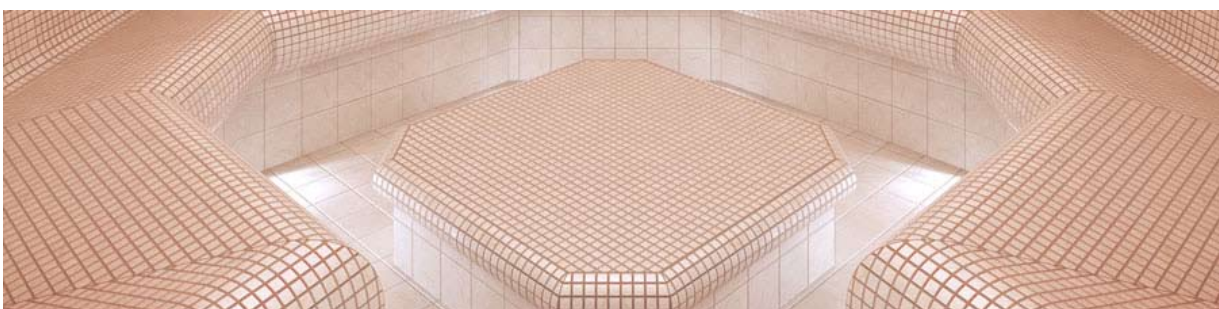
Project Sparkling Hill Resort Hotel

Location Vernon, British Columbia, Canada,

Timetable September-December 2009

Products used 152 wedi Fundo 5 x 5 ft, wedi building panel, wedi curbs

Description The 152-room astonishingly beautiful resort and wellness hotel will offer the traditional treatments, including reflexology, aromatherapy, soothing moor mud wraps and therapeutic massages, along with a complete aesthetics program.



# Chateau Woods



Client Floorcraft

Project Chateau Woods

Location Woodinville, Washington

Timetable 2009

Products used ½" wedi building panel

Description wedi building panel was applied and sealed to the tubs edge with wedi sealant. A total of 120 tub surrounds on this project.



# Harvard and Highlands



Client	WG Clark / Superfloors
Project	Harvard & Highlands
Location	Seattle, Washington
Timetable	2009
Products used	Wedi fundo Shower. Pan, full foam curb, ½" wedi building panel
Description	Complete wedi shower systems were used in all 87 shower enclosures



# Riverpark Condos



Client Legacy Partnership / Floorcraft

Project River Park Condo's

Location Redmond, Washington

Timetable 2009

Products used Wedi fundo Shower. Pan, full foam curb, 1/2" wedi building panel

Description Complete wedi shower systems were used in all 78 shower enclosures



# Belvedere Vallejo



Client                      Mandarich Developments

Project                     Vallejo, California

Location                 Vallejo, California

Timetable                2008-2009

Products used            800 Fundo Shower Systems in various sizes



# Plaza Towers



Client	Opus West
Project	Plaza Towers
Location	Irvine, California
Timetable	2008
Products used	600 Fundo Shower Systems in various sizes



# Plaza Towers



Client Wirtz Quality Installations

Project Palomar Hospital

Location San Diego California

Timetable 2010

Products used Wedi Custom made 3'X8'X 5/8" Wallboard,

wedi 3'X8'X5/8" Construct wallboard (for radius applications)

280 Bathroom/shower Pod's. The Palomar Project is the largest

Construction Project in the western USA.



# Wellness & Spa Projects 2009/2010



International Trump Hotel, Soho, NYC: 2 x Hammam

Marriot Hotel, Chicago Downtown, IL: 2 x steam rooms, 2 x Hammam

YMCA , Raleigh, NC: 2 x Steam Room

24 hr Fitness Center, Honolulu, Hawaii: 1 x Steam Room

Epicenter Club, Seattle, WA: 1 x Steam Room

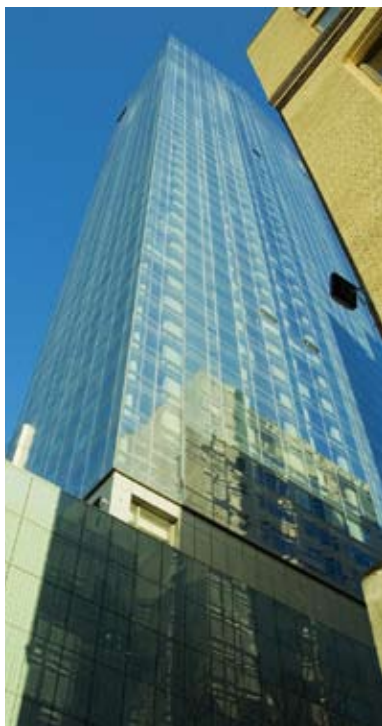
Ritz Carlton Hotel, Maui, HI: 1 x Steam Room

Pacific Club, Del Mar, CA: 1 x Steam Room

Hard Rock Hotel, San Diego, CA: 1 x Steam Room

Lecom Health and Wellness Center, Erie, PA: 1 x Steam Room

Le Nordik – Quebec, ON, Canada: 1 x Steam Room



Installation Trump Soho NYC, New York