

# wedi Fundo Installation



1. Cut the 2" pipe flush to the surface of the floor construction. Make sure that the cut out fits to the Fundo panel drain. Cut out a 5" diameter hole around the 2" pipe to allow the wedi drain to be inserted into



the subfloor. The drain and trap have to be sturdily fastened to the sub floor.

2. Assemble the drain unit following the instruction drawing.



3. Set up a continuous 1/4" bead of wedi caulk along the top side of the wedi Fundos' valve groove profile.



4. Drop the drain body firmly into the caulk.



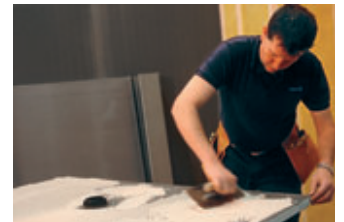
5. Turn the Fundo pan upside down and apply the rubber and the fiber gasket.



6. Tighten the gaskets firmly to the pans steel ring using the locking nut. Make sure the drain body is still safely received in the valve-bead of caulk.



7. Skim coat the thinset ANSI 118.4 and comb through with a 1/4" notched trowel.



8. Trowel the thinset on the rear side of the Fundo again using a 1/4" notched trowel.



9. Press the Fundo firmly into the thinset bed, ensuring that the installation is level and void free. Apply some weight equally and for at least 30 minutes (thinset bags).



10. Set up the rubber caulking gasket (with the bevelled side up) around the 2" pipe in the subfloor. The rubber gasket must be flush with the upper end of the 2" ABS or PVC pipe. DO NOT USE ANY LUBRICANTS.



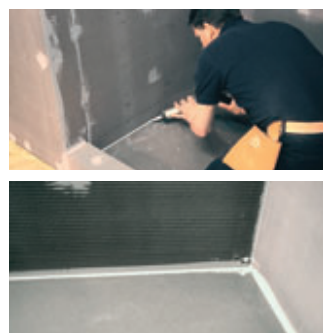
11. Tighten (squeeze) the rubber caulking gasket firmly with the caulking nut (use a flat headed screwdriver) and finally insert the plastic frame and strainer on top (without adhesive). The frame and strainer will hold in a flexible grout joint.



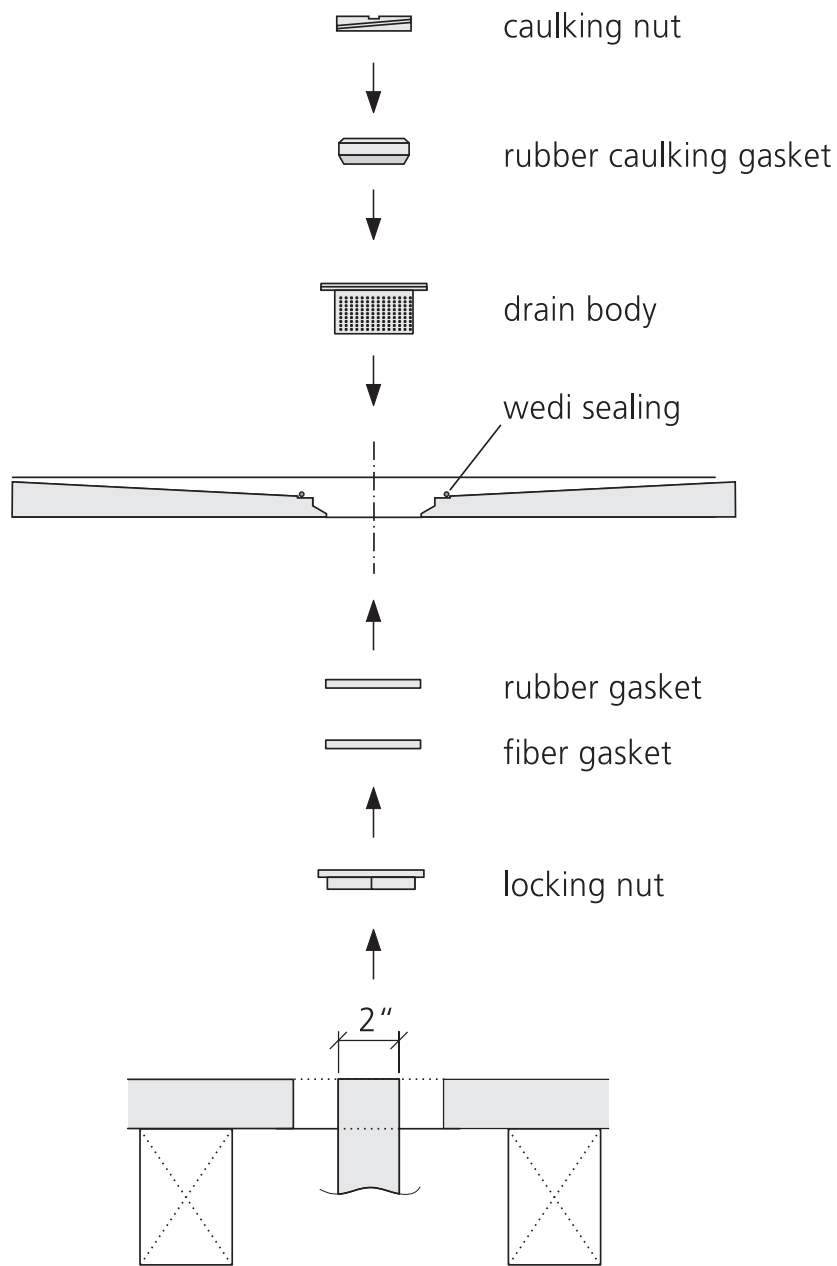
12. Set up a continuous 1/2" bead of wedi caulk along the pans channel on the outer perimeter.



13. You are ready to install the wedi panels around the Fundo, fixed and sealed in the Fundo channels bead of caulk.



14. Fasten the panels directly to the studs using one wedi fastener per foot. Set up continuous 1/4" beads of caulk between and in all seams to adjacent panels. Excessive caulk is smoothed out using a putty knife. An additional 1/2" bead of caulk is set along the inside bottom joints connecting the wall panels and pan.



wedi Tech. Support  
wedi Coporation

Tel.: 770.992.5320 · Fax: 770.587.1352 · E-mail: bastian.lohmann@wedcorp.com