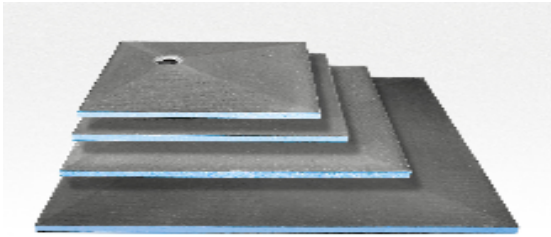




wedi TECH TIP September 2008



**wedi curb installations using
the Full Foam Curb within the
wedi shower system**

Dear valued wedi Customer,

In this September issue of TechTip I would like to detail the installation methods for a proper wedi curb installation within the wedi Fundo shower system set up.

“Proper”, translated into wedi native corporate language, means as always a simple duty to offer multiple benefits through modular system concepts based on highest quality standards: safe, waterproof, sustainable, clean and fast.

Next to that we will take a look at the versatility of wedi shower and curb systems which can be used in many, many different design layouts for custom showers, not only the square and rectangle ones.

Sincerely,

Bastian Lohmann
Technical Sales Manager

wedi News Ticker:

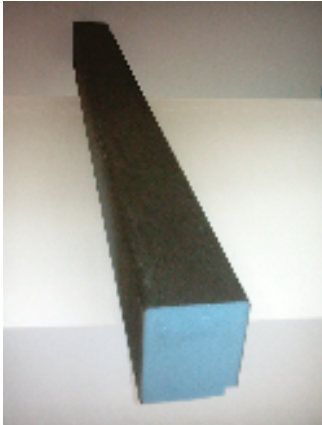
- ✓ **wedi welcomes Ron Mayer as the new wedi representative for the state of Florida!**
- ✓ **wedi welcomes Jonathan Davis as the new wedi representative for the state of Texas!**

Please find all representatives contact information on www.wedicorp.com

- ✓ **wedi decided to extend the shower drain covers for Oil Rubbed Bronze. We can now offer Brushed Nickel, Copper, Brass, Chrome and Oil Rubbed Bronze**
- ✓ **wedi displays at Cersaie International Tile & Stone Show in Bologna, Italy (Area 44 Stand 63). We are looking forward to welcoming all visitors from the States and Canada and will have US staff available for you.**

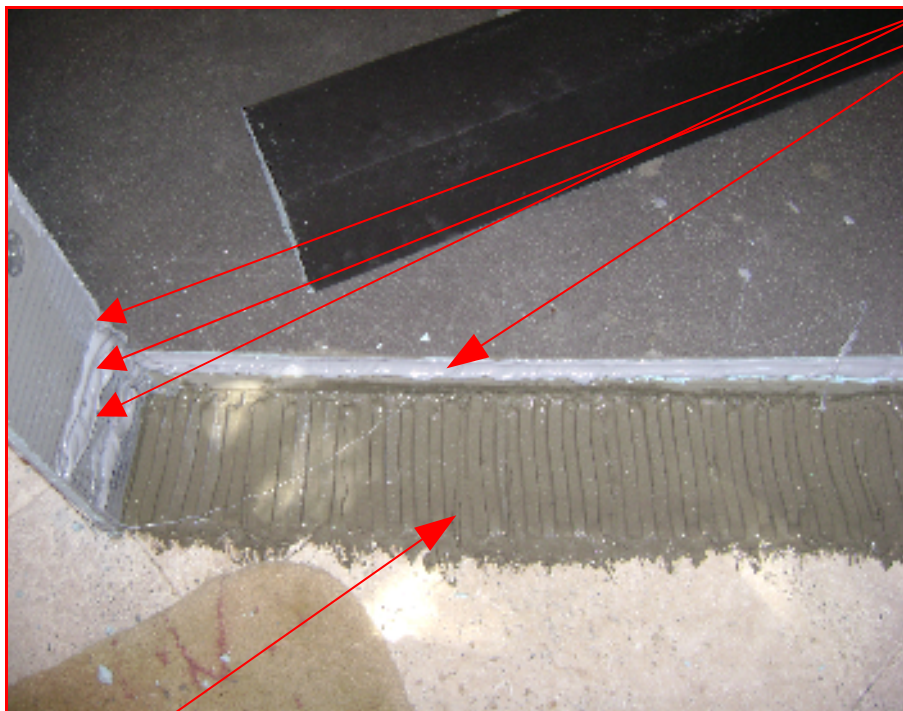
wedi TECH TIP – Installation of wedi Full (solid) Foam Curbs

Picture # 1



The wedi Full (solid) Foam Curb comes in dimensions of 4 1/2" x 5" x 60" or 4 1/2" x 5" x 96" (W x H x L). It can be cut to size including angled corners where two curbs will be joined. The curbs have a pre-slope on the top side and are pre-notched on the bottom to interlock with the wedi Fundo Shower Pan notched channel. When curb parts are connected with other curbs, a shower pan or to a wedi Building Panel, a continuous 1/2" thick bead of wedi Joint Sealant is applied along all joints inside or between the connecting parts (Picture #2) and on top of the joint (Picture #3). The curbs are then adhered to the floor using a 1/2" thick bed of modified thinset mortar

Picture # 2



Joint sealant on both sides where curbs connect to wall, in between two curb parts, in between curb notch/shower base channel on all vertical and horizontal parts. The curb has a tight fit to all adjoining parts.

Tile adhesive/ mod. thinset mortar 1/2" x 1/2" notch

Picture # 3



Once curb parts are installed and weight is applied on them for at least 30 minutes, the wedi Joint Sealant is applied over all joints covering an area of 1" on each side of the joint. The sealant is smoothed out and worked into the wedi surface using a putty knife.





Picture # 4

The shower curb is tiled and curbs can receive a maximum weight of 480 lbs. per linear foot when installed over minimum 3/8" marble or adequate porcelain tile cut in sections fitting the curb width.





More Ideas....

